

20 Hampden Street  
York, YO1 6EA  
£1,350 PCM



This lovely two bedroom mid-terrace house located in the sought after location of Bishophill and within close proximity of the city centre and all local amenities.

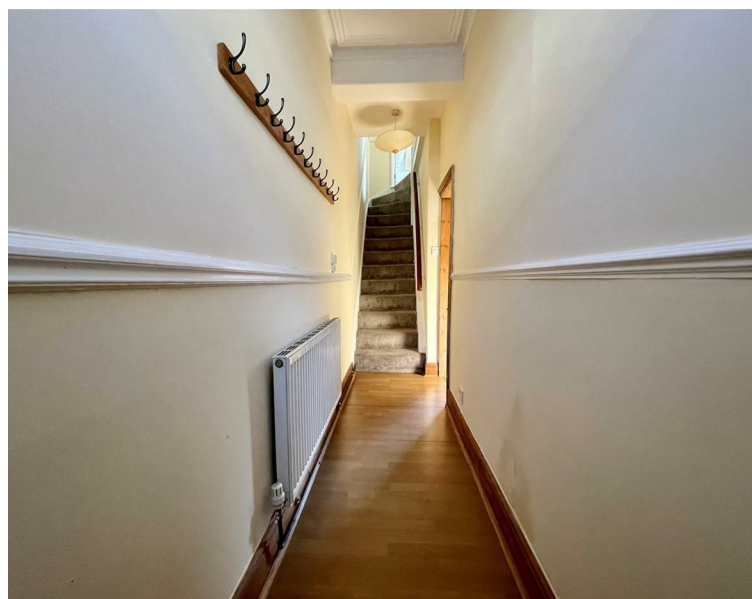
The property comprises an entrance hallway which opens up to the lovely well presented open-plan lounge and dining area. The property boasts a modern kitchen with integrated oven and hob and overlooks the courtyard at the rear. As you proceed up the stairs there are two well proportioned bedrooms along with a 3 piece bathroom suite. On the third floor there is a loft space which would be great as a guest bedroom or an office space.

Council Tax band C.

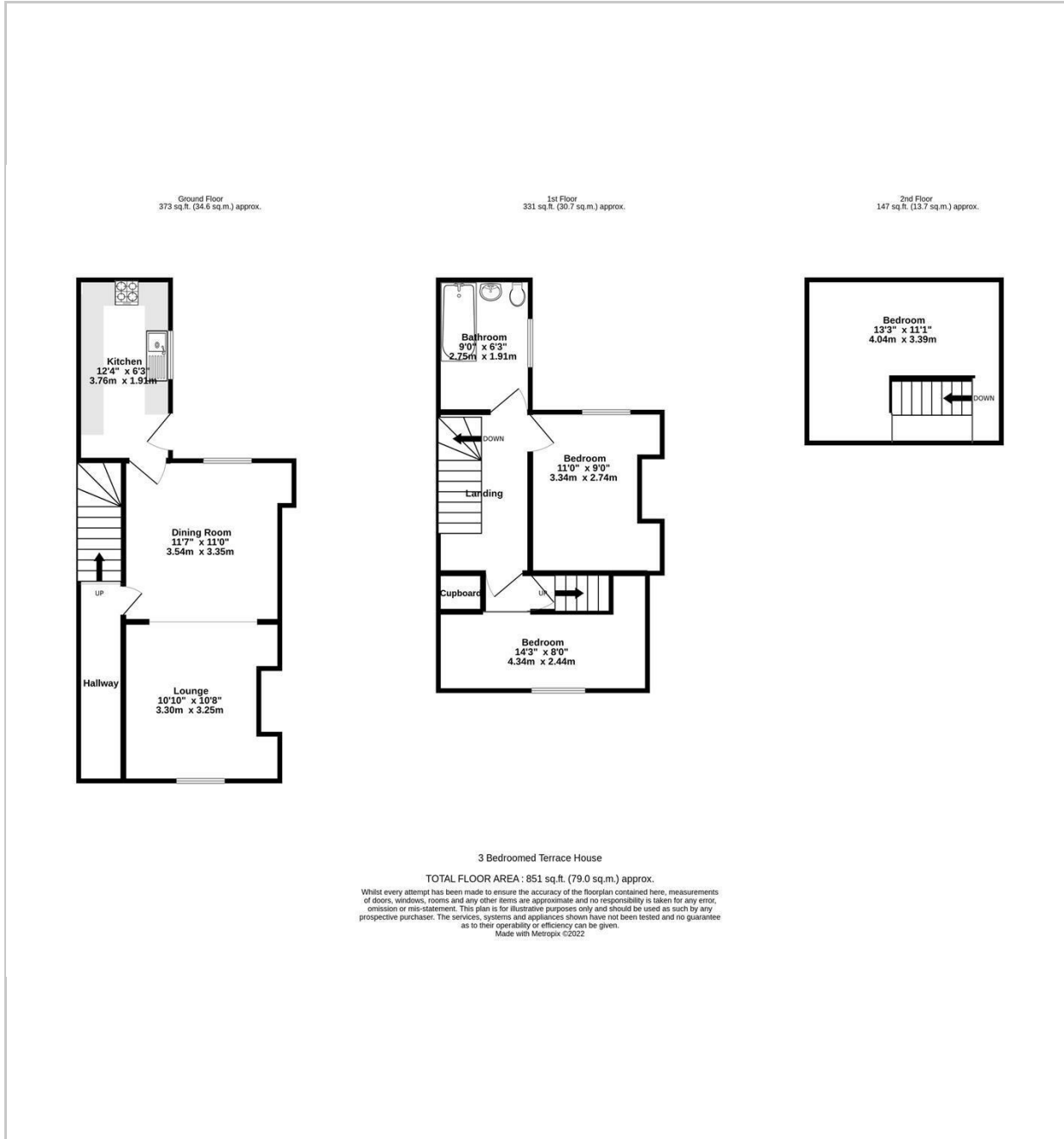
EPC rating E.

Available from the start of July 2026.

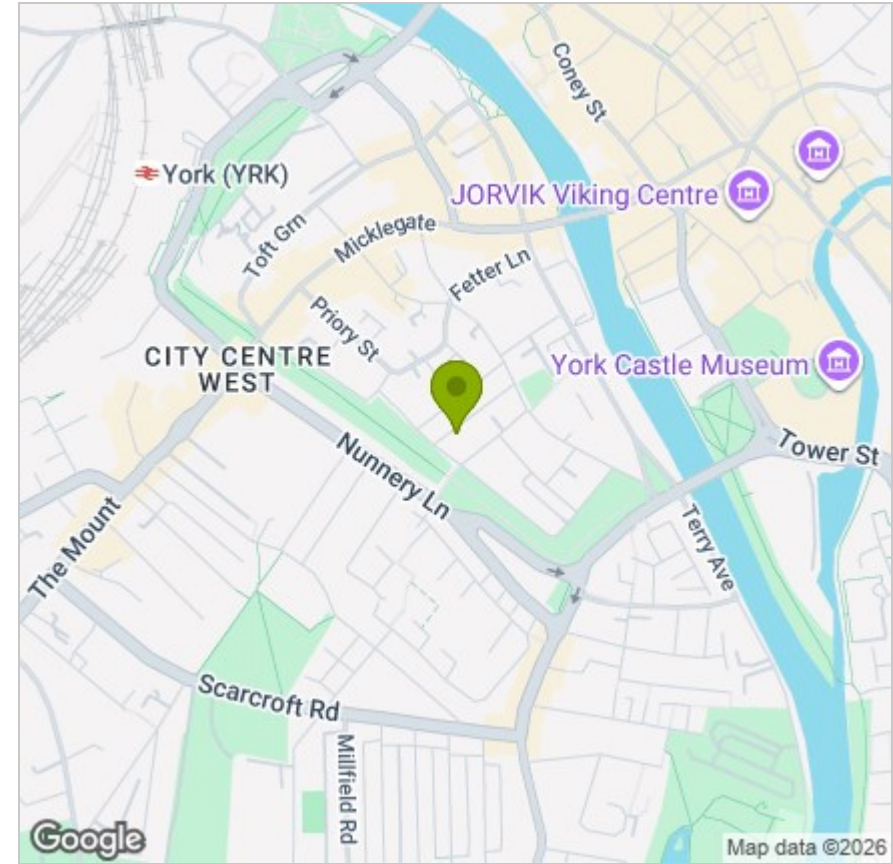




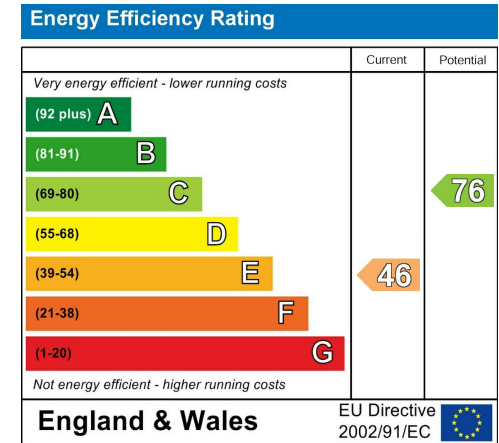
# FLOOR PLAN



# LOCATION



## EPC



These particulars, whilst believed to be accurate are set out as a general outline only for guidance and do not constitute any part of an offer or contract. Intending purchasers should not rely on them as statements of representation of fact, but must satisfy themselves by inspection or otherwise as to their accuracy. No person in this firm's employment has the authority to make or give any representation or warranty in respect of the property.